



Fan Selector 10.0 Installation Guide

Date Created: July 2014

Table of Contents

Recommended Hardware Levels.....	2
Fan Selector Prerequisites.....	2
Fan Selector Installation	5
Post-installation Steps	12

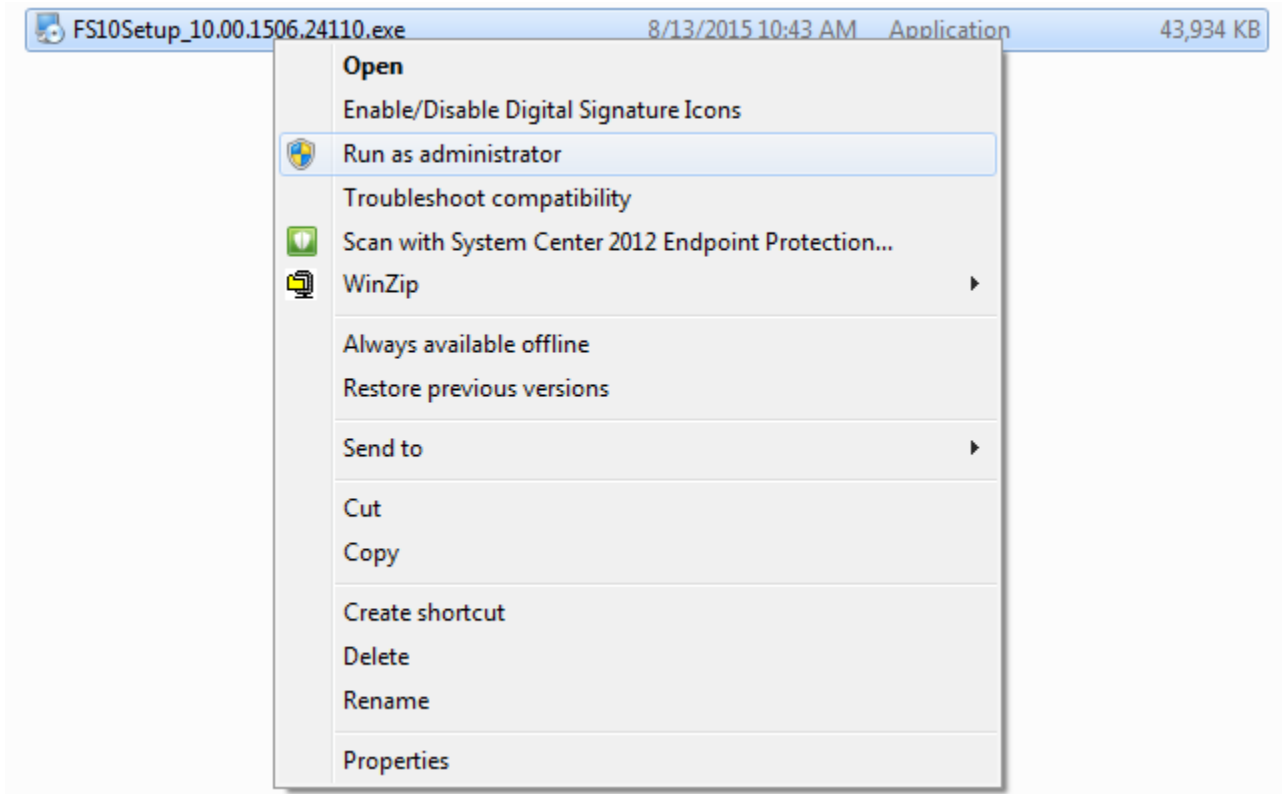
Recommended Hardware Levels

Level	RAM	Operating System	CPU	Disk
Recommended	8 GB	Windows 7, Windows 8 and Windows 10, service pack 1 32 or 64 bit	2.8 Ghz dual-core	10 GB free

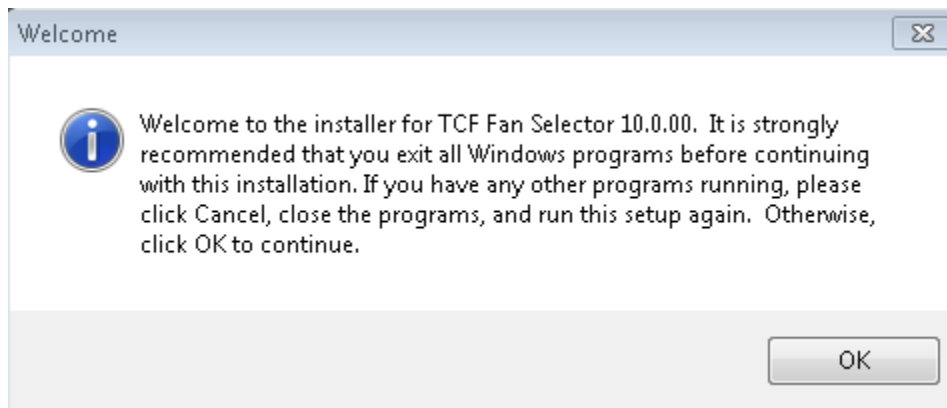
The Fan Selector 10 installation requires an internet connection.

Fan Selector Prerequisites

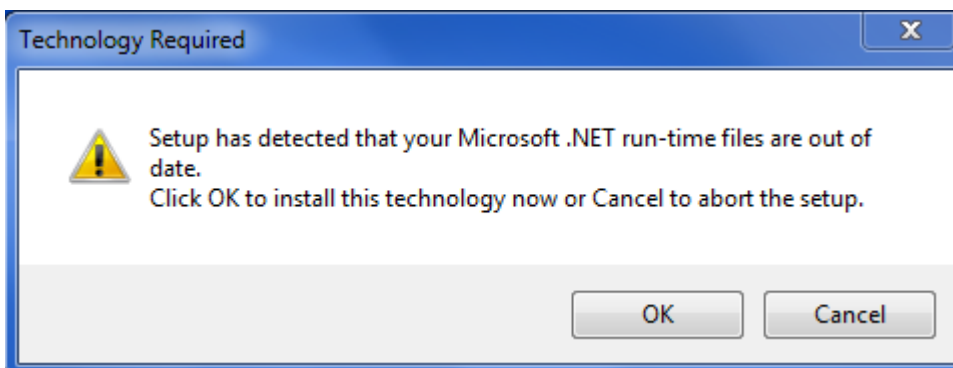
1. **Download the FS10 Exe to your computer before running the executable.**
2. **Right click** the FS10Setup_10.0.15xx.xxxx.exe from your computer and select **“Run as Administrator”**.



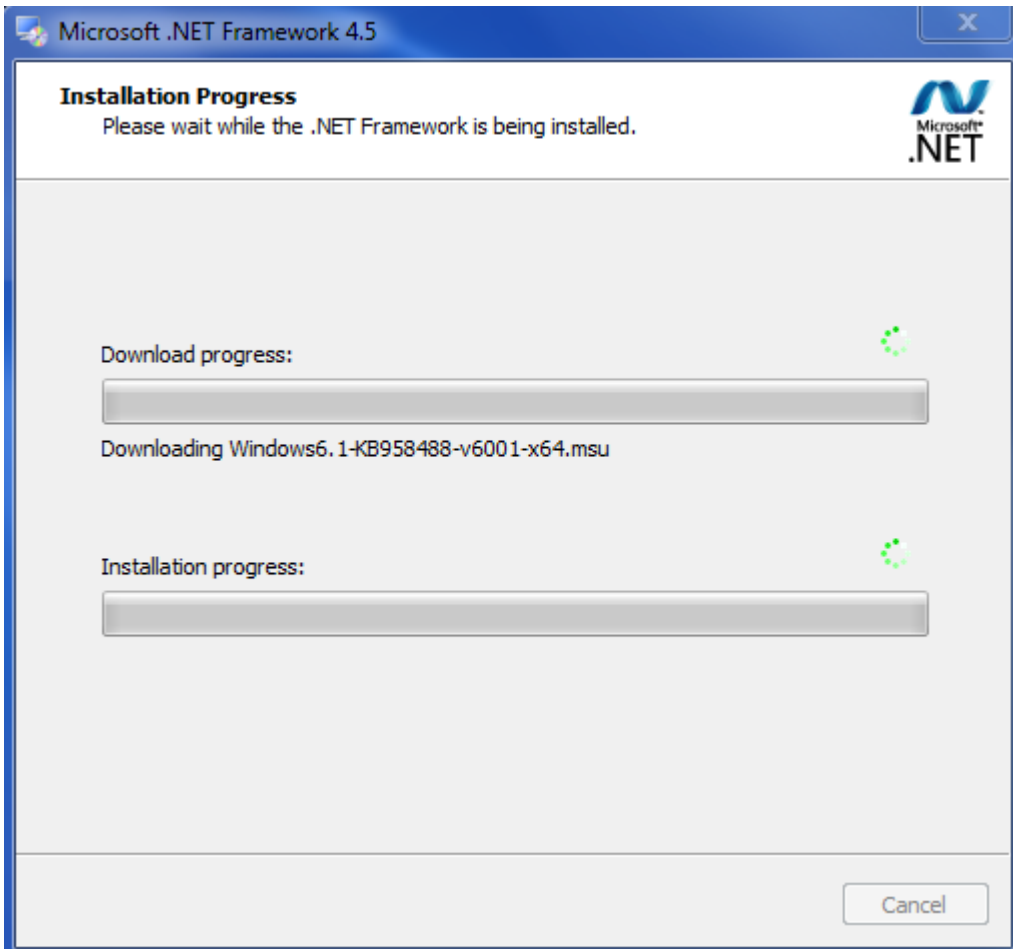
3. The Welcome screen will appear, click **“OK”**.



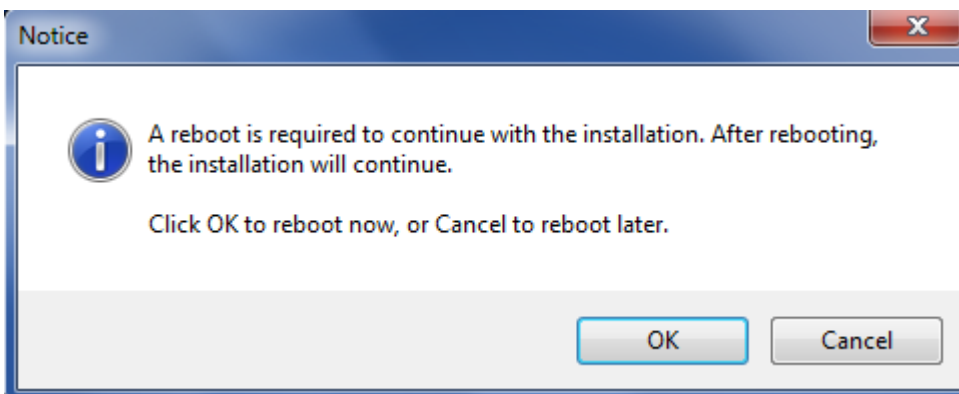
4. Fan Selector 10 requires other applications that may or may not already be installed on your computer. The "Technology Required" window will appear, click "OK". If you already have Microsoft .NET installed the executable will skip to Installing SQL Server Express (step 1 under Fan Selector Installation).



5. Microsoft .NET Framework 4.5 is required. It will take several minutes to download and install.



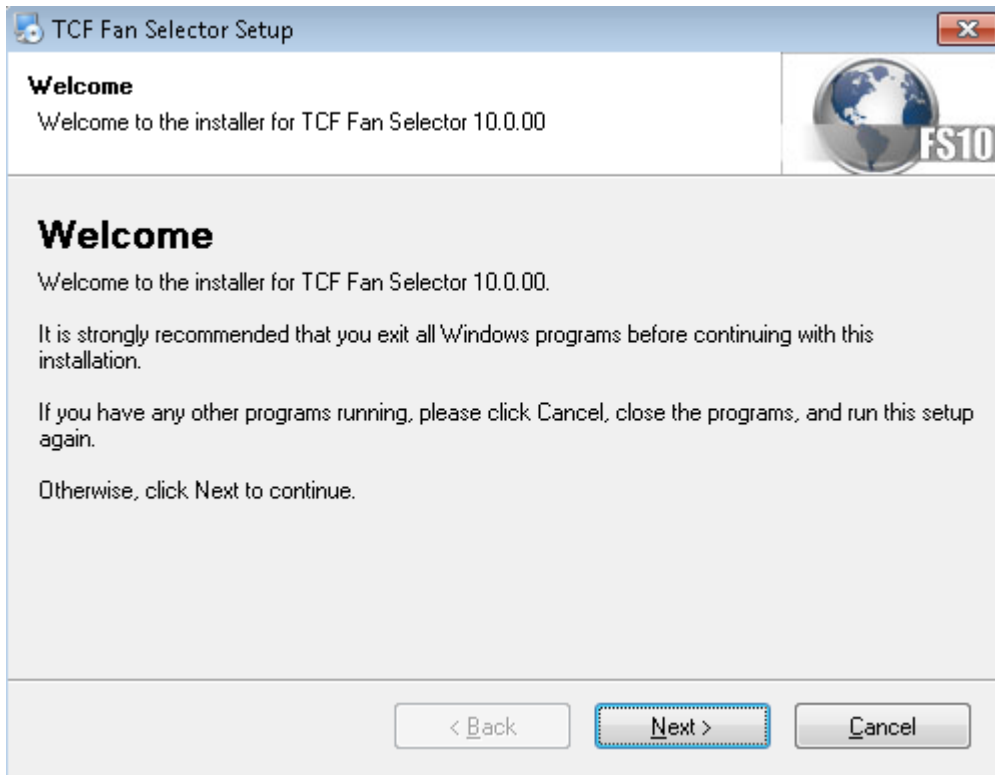
6. After the Microsoft .NET Framework 4.5 files are installed, your PC may require a reboot. Click "OK".



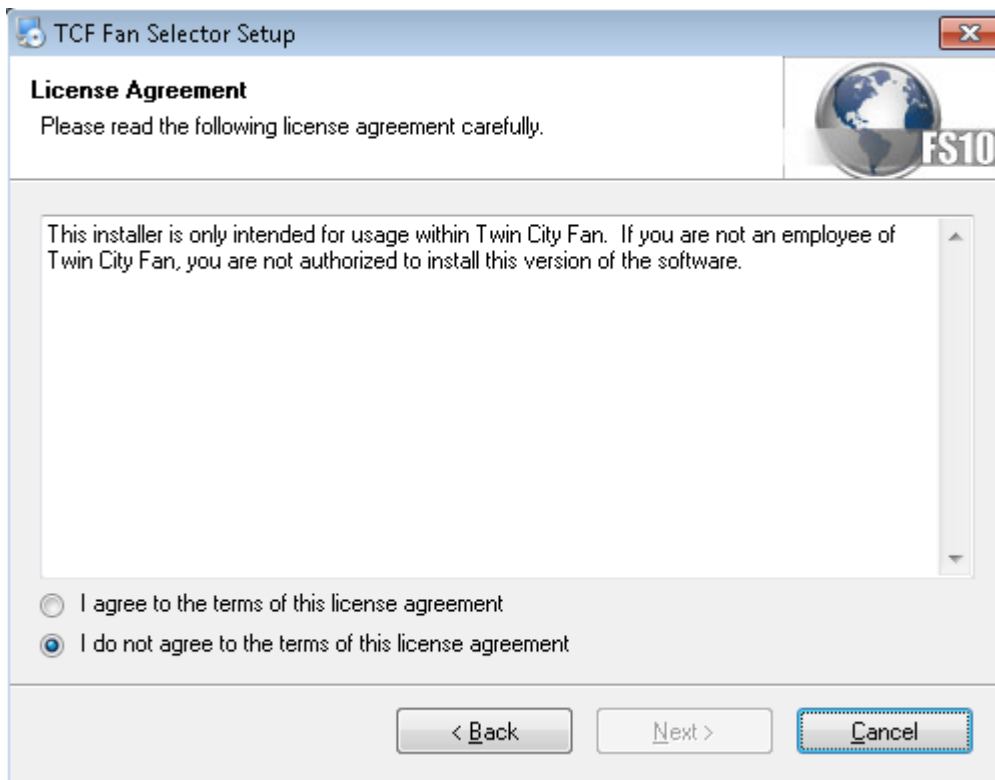
After your computer reboots then the installation may automatically start again with the FS10 install. If not, Double click the FS10Setup_10.0.15xx.xxxxx.exe from your computer.

Fan Selector Installation

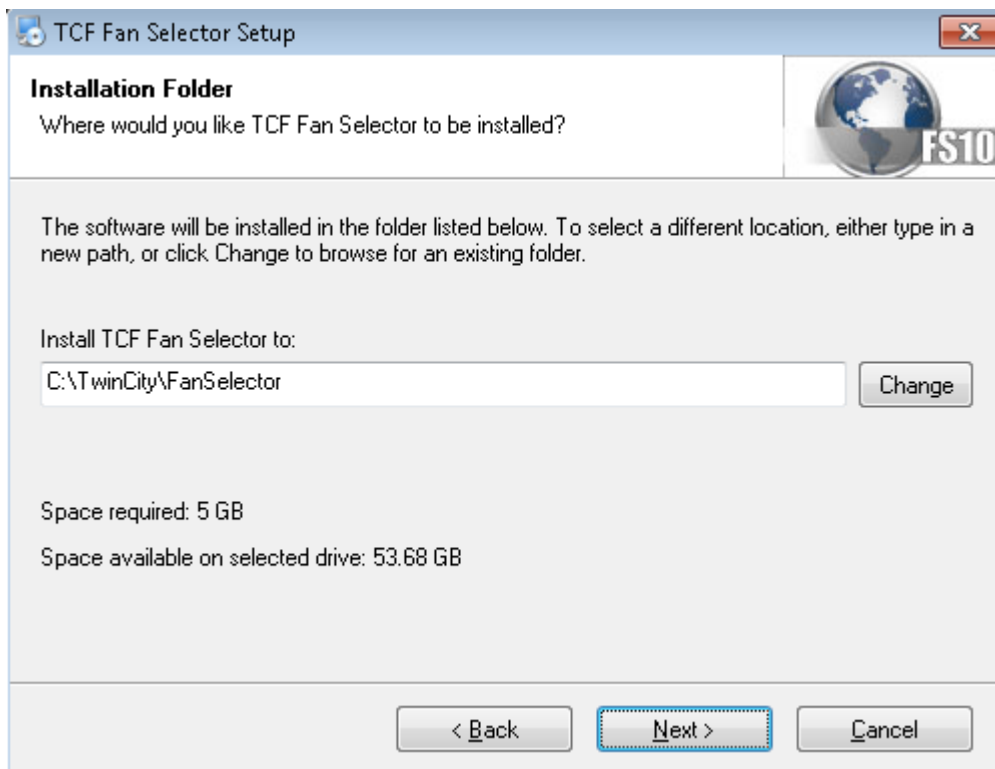
1. After .NET Framework 4.5 is installed the “TCF Fan Selector Setup Welcome” window will appear. Click “Next”



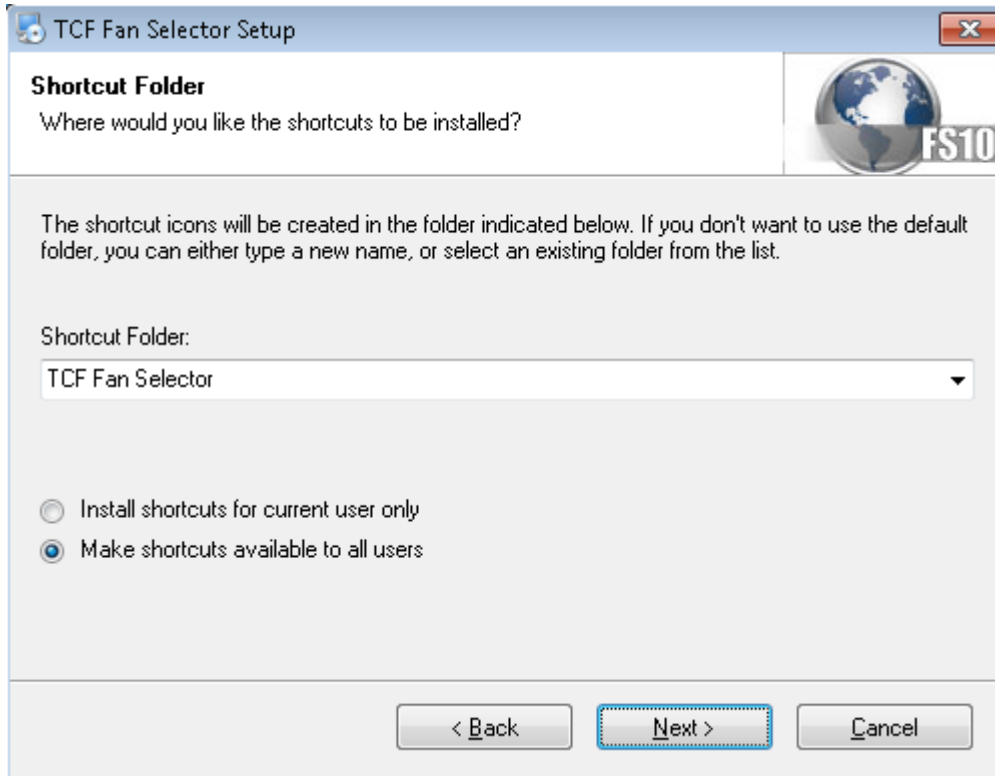
2. The License Agreement window will appear, please read the agreement and click “I do agree to the terms of this license agreement”. Click “Next”.



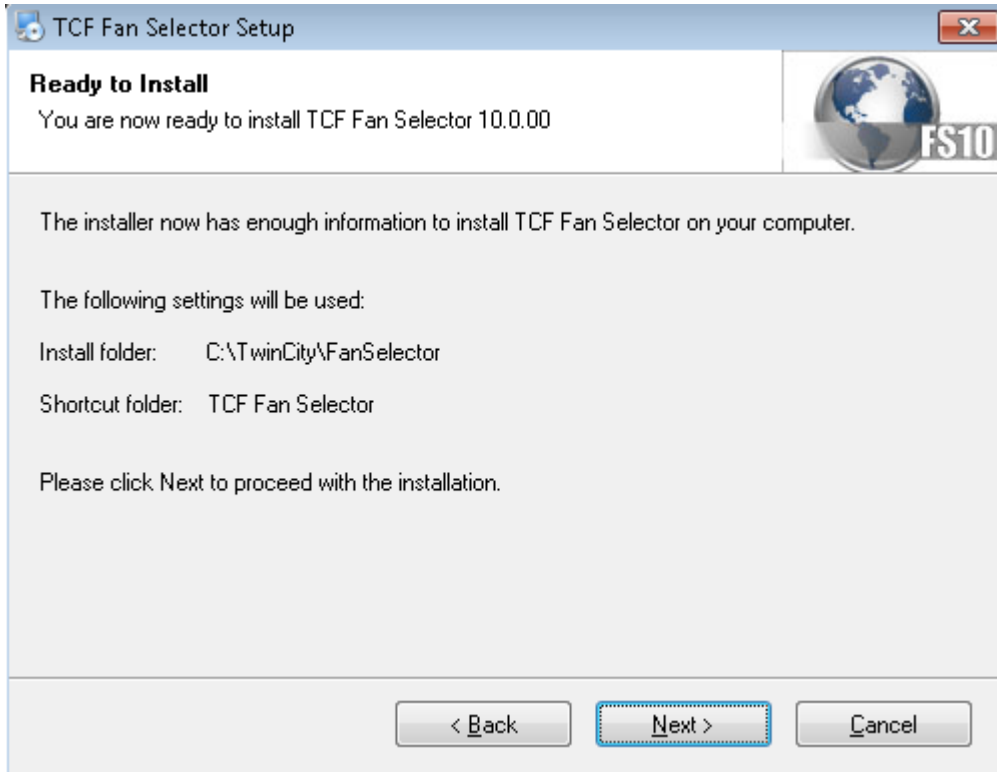
3. The "Installation Folder" screen will appear, leave the default installation path and click "Next".



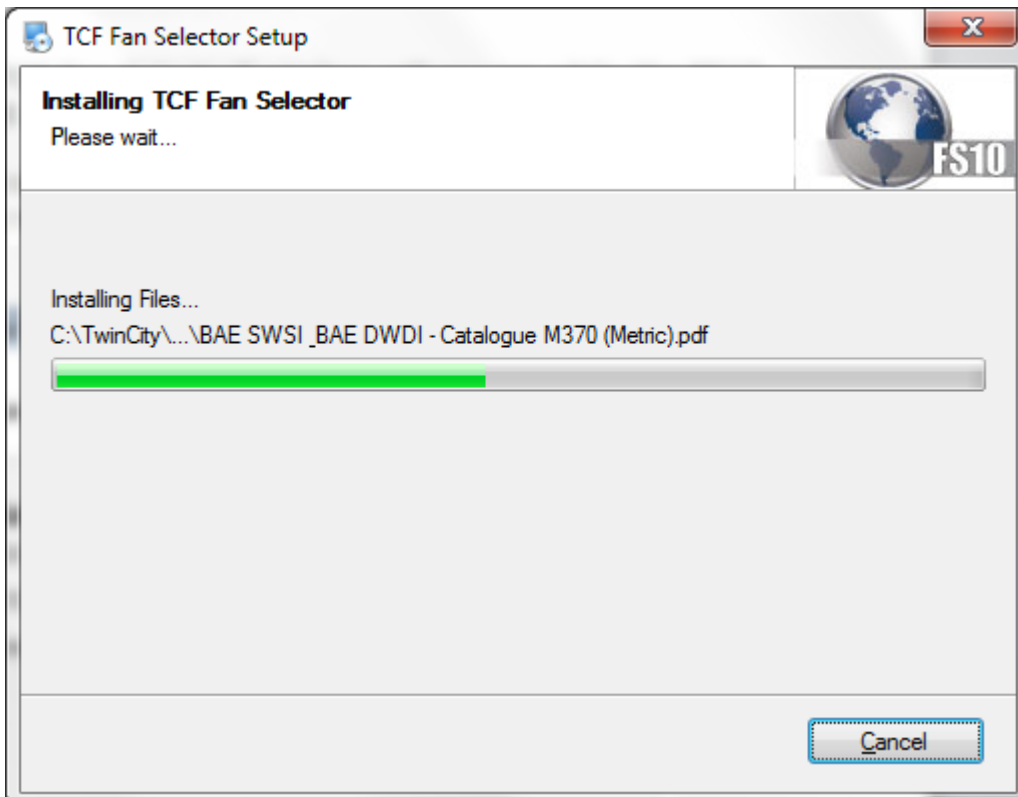
4. The “Shortcut Folder” window appears leave the default shortcut folder name and leave the default radio button “make shortcuts available to all users”, click “Next”.



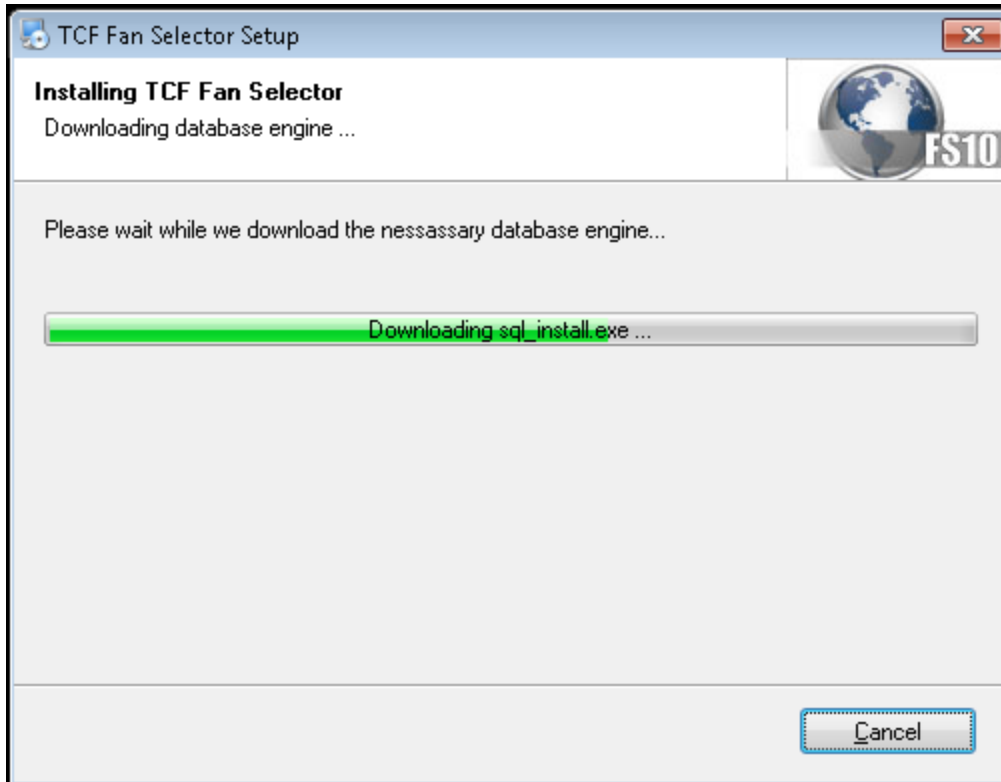
5. The “Ready to Install” window will appear, click “Next”.



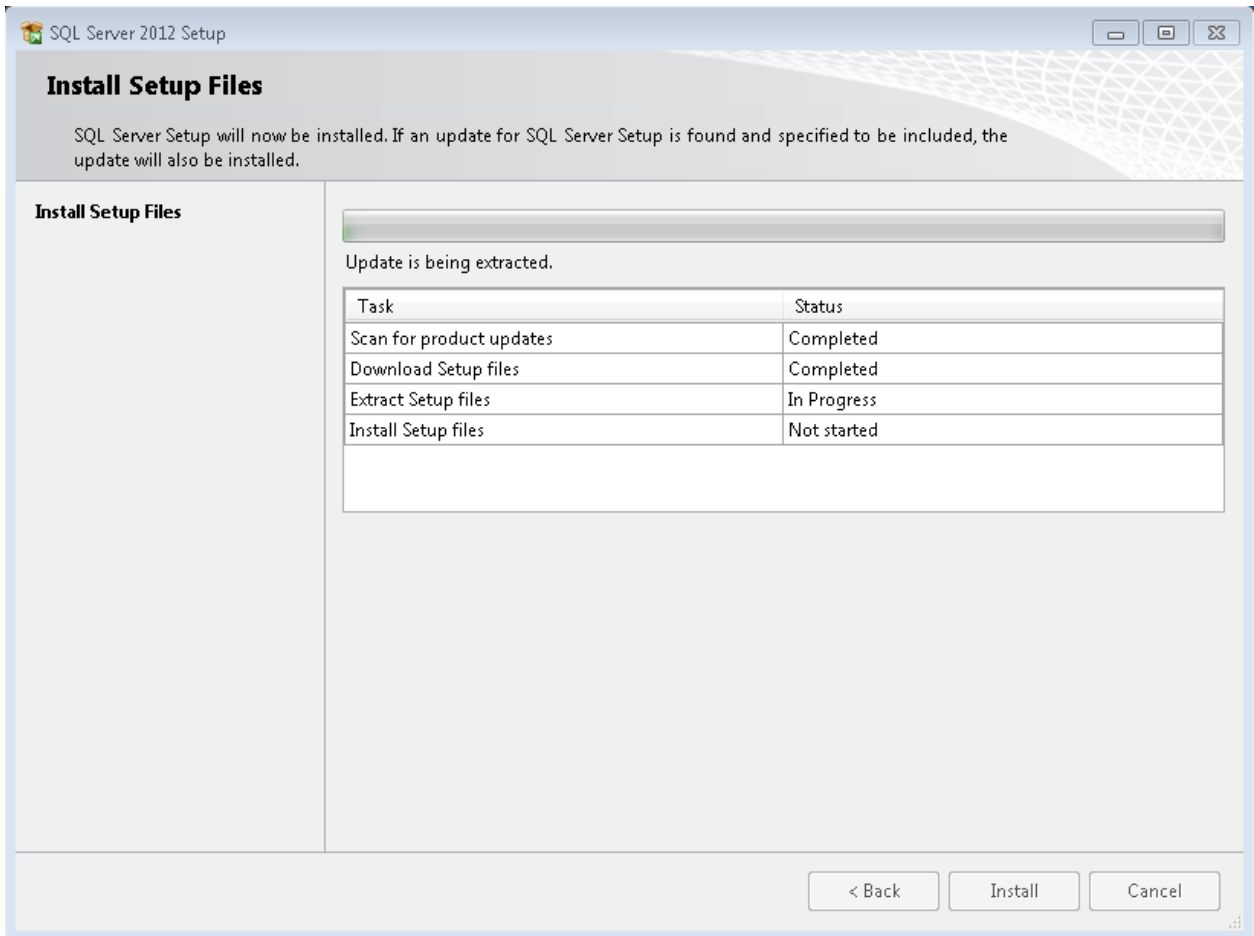
6. The “Installing TCF Fan Selector” window will appear while the FS10 files are installed.



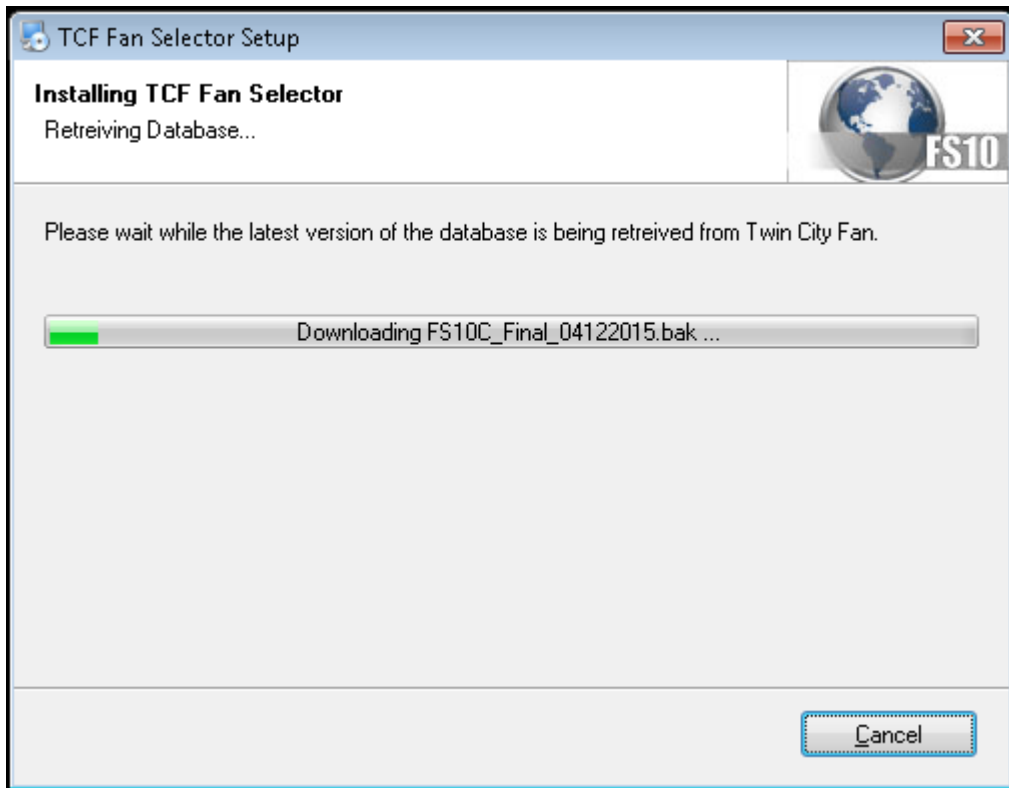
7. The “Downloading database engine” window will appear. This may take several minutes and is dependent on your Internet connection speed.



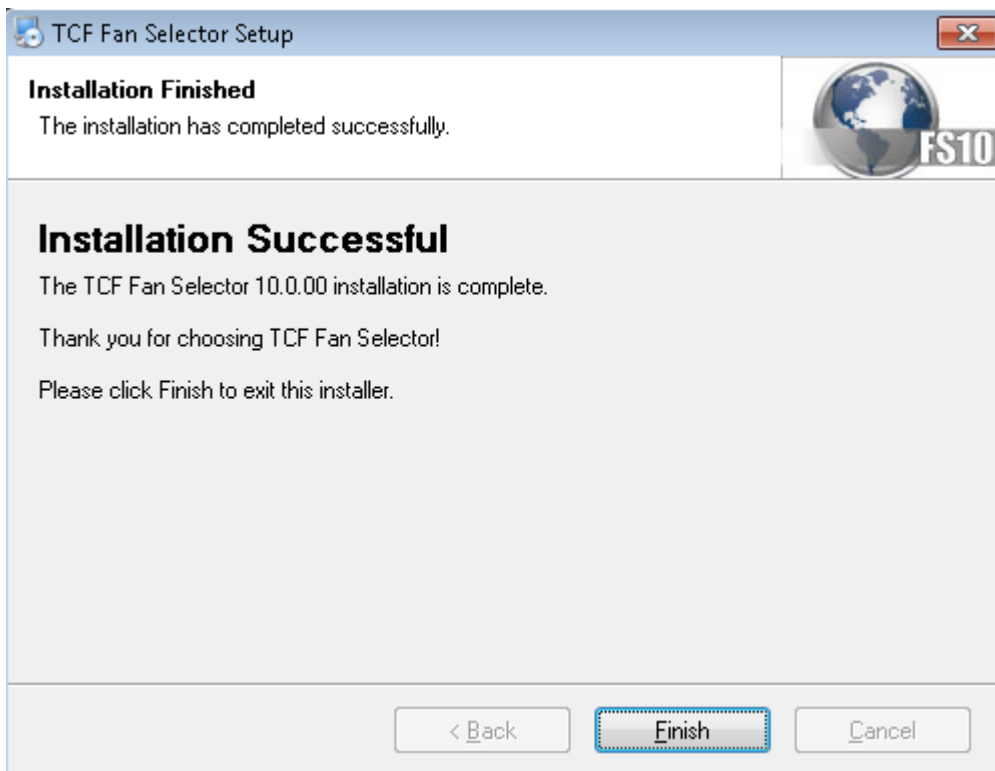
8. The “SQL Server 2012 Setup - Install Setup Files” screen will appear. This step will take several minutes.



- The "Retrieving Database" window will appear. This may take several minutes and is dependent on your Internet connection speed.



10. The installation is complete, the "Installation Finished" window will appear. Click "Finish".

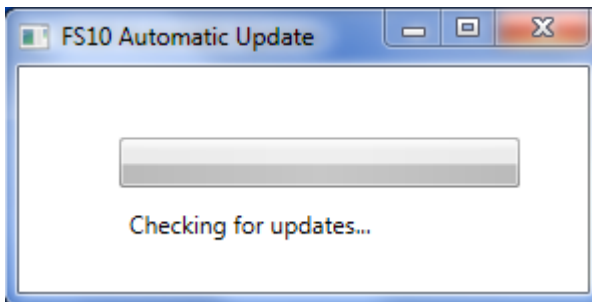


Post-installation Steps

1. After the installation is complete the Fan Selector 10 icon will appear on your desktop. Double click the icon to launch FS10.



2. Next, FS10 will check for updates which may take several minutes. After the updates are complete the login screen will appear.



3. Login using the following credentials. Check "Remember my password" if you do not want to enter your password in the future.

Username: your email address

Password: abcde12345-

4. If you have issues logging in, contact the Fan Selector Helpline or email

Fan Selector Helpline: 763-551-7568

Email: fanselectorhelp@tcf.com